

SW 1/4
SECTION 29, T.6N., R.2W., S.L.B. & M.

IN WEBER COUNTY

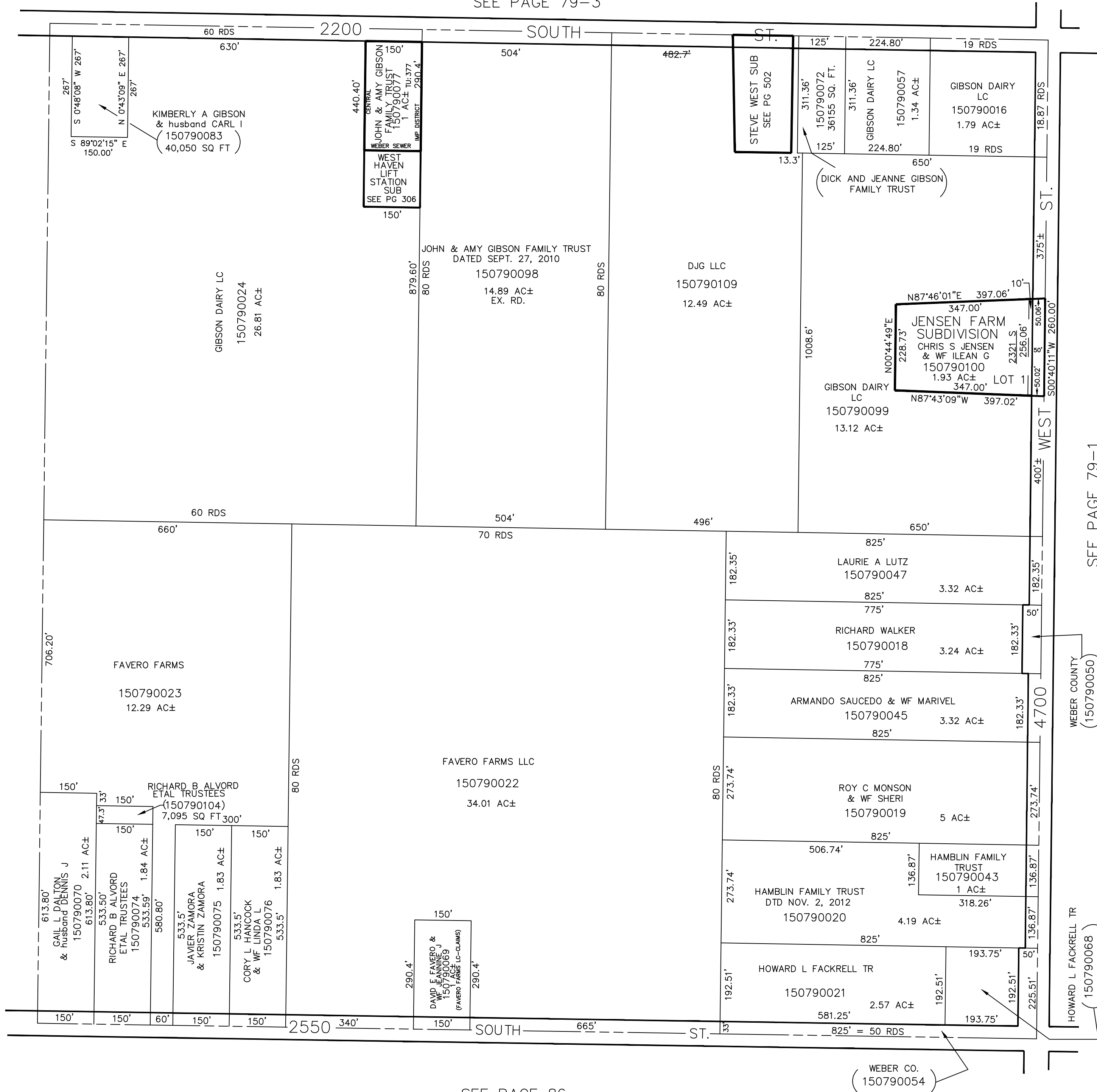
SCALE 1" = 200'

SEE PAGE 79-3

TAXING UNITS: 53,377

SEE PAGE 81

SEE PAGE 79-1



SEE PAGE 86

WEBER CO.
(150790054)

WEBER COUNTY
(150790050)

HOWARD L FACKRELL TR
(150790068)
(37,299 AC±)